

Houston Sail and Power Squadron

The “Big Buoy Challenge”



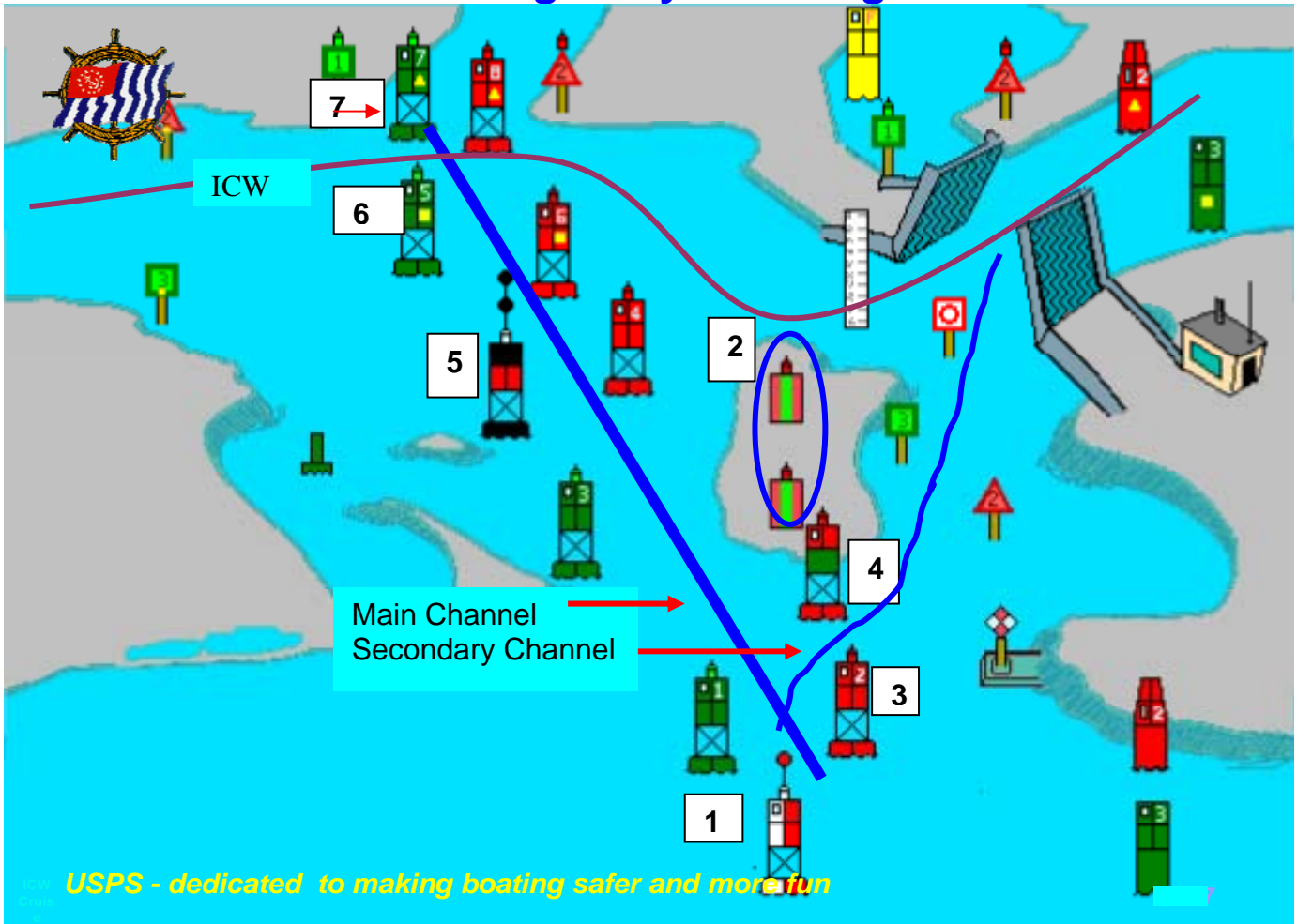
Questions

You are approaching the harbor in your boat. You want to follow the main channel from Sea to the Intracoastal Waterway and then go West on the ICW (✓ the Correct Answers Below)

1. You first encounter a Red and White vertically striped Buoy. It indicates:
 - A. Danger
 - B. Center of Channel and Safe Water
2. Directly ahead you see two rectangular markers, one in front of the other. These are:
 - A. Marking the land mass where they are located
 - B. Range markers indicating the center of the channel for approaching vessels
3. As you progress from Sea up the channel you keep the Red Buoys to:
 - A. Port
 - B. Starboard
4. You encounter a Red over Green Preferred Channel Buoy. The top Red Band indicates:
 - A. The Secondary Channel
 - B. The preferred Channel
5. Off to Port you see a Red and Black striped Buoy it indicates:
 - A. Safe Passage
 - B. Isolated Danger
6. You round Green Buoy #5 to enter the Intracoastal Waterway. ICW Buoys:
 - A. Are identified by small Yellow Triangles or Squares painted on their sides
 - B. Have special shapes that identify them as ICW Buoys
7. You are now heading West on the ICW. You note that the Buoys with Yellow Triangles :
 - A. Are kept to Starboard (landward) when traveling in a clockwise direction along the ICW
 - B. Are kept to Port (seaward) when traveling in a clockwise direction along the ICW

Have a Safe Voyage...Answers on the Back

Answers The “Big Buoy Challenge”



1. You first encounter a Red and White vertically striped Buoy. It indicates:
 - A. Danger
 - B. ✓ Center of Channel and Safe Water
2. Directly ahead you see two rectangular markers, one in front of the other. These are:
 - A. Marking the land mass where they are located
 - B. ✓ Range markers indicating the center of the channel for approaching vessels
3. As you progress from Sea up the channel you keep the Red Buoys to:
 - A. Port
 - B. ✓ Starboard
4. You encounter a Red over Green Preferred Channel Buoy. The top Red Band indicates:
 - A. The Secondary Channel
 - B. ✓ the Preferred Channel
5. Off to Port you see a Red and Black striped Buoy it indicates:
 - A. Safe Passage
 - B. ✓ Isolated Danger
6. You round Green Buoy #5 to enter the Intracoastal Waterway. ICW Buoys:
 - A. ✓ Are identified by small yellow triangles or squares painted on their sides
 - B. Have special shapes that identify them as ICW Buoys
7. You are now heading West on the ICW. You note that Buoys with Yellow Triangles:
 - A. ✓ Are kept to Starboard (landward) when traveling in a clockwise direction along the ICW
 - B. Are kept to Port (seaward) when traveling in a clockwise direction along the ICW

Great Job...Now it's time to continue your Boating Education with Houston Sail and Power Squadron