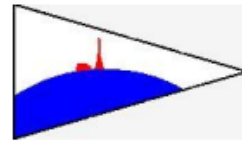




United States Power Squadrons®
Great Blue Hill Sail & Power Squadron
Duel Bays Cruise, August 2017



PORT CAPTAIN – Jim Andersen – 781-248-5759, james.andersenjr@outlook.com

WICKFORD, R.I. – Tuesday, August 15, 2017 – 9.6nm from Bristol

With its historic churches, quaint shops, and charming homes along Main Street, Wickford has the appearance of an 18th century New England village caught up in a time warp. In fact, the little harbor's history stretches back to before the Revolutionary War. During the war, Wickford sheltered a number of prominent Newport residents escaping the British occupation. The village's prosperity as a trading and fishing port peaked in the 18th century, and much of Wickford's architecture and charm reflect that era through an exquisite assortment of well-maintained colonial buildings, most within easy walking distance from the harbor. Today, Wickford Village and Allen Harbor to its north are considered two of the jewels of Narragansett Bay.



Services – sorted by closest to historic village

- **[Brewer Wickford Cove Marina](#)** – (401-884-7014), interesting trivia – their paint crew once finished Billy Joel's concert piano with Awlgrip!
Website – <https://www.byy.com/marinas/brewer-marinas-wickford-cove-wickford-ri/#tab2-2>
Slips and moorings available (slips are \$4/ft), full service with showers etc
Monitors VHF Channel 9/11

- **Wickford Shipyard** – (401-294-3361), full service. Transient slips but no moorings
- **Wickford Yacht Club** – (401-294-9010) – Reciprocal Privileges. Moorings only
- **Pleasant Street Wharf** – (401-294-2791), full service, Transient slips and moorings
- **Wickford Marina** – (401-294-8160), full service, Transient slips, but no moorings

Restaurants and Cafes

- **Tucker's Wickford Diner** (401-295-5477), breakfast/lunch, no dinner during week
- **Beach Rose Café** (401-295-2800), specializes in fresh seafood, salads and sandwiches
- **Tavern by the Sea** (401-294-5771), dishes out inventive lunch and dinner menu, and has patio dining
- **Pastry Gourmet** (401-295-8400), sells deli sandwiches, spinach pies, calzones and coffee
- **The Place** (401-294-0800) offers great pizza
- **Inside Scoop**, at 70 Brown Street, is a must visit for those who appreciate freshly made, delicious ice cream. Or so says Embassy Cruising Guides





SEA TOW.
800-4-SEATOW

Marine Facilities and Services

1 2 3

ID	Facility Name	Phone	DOCKAGE		Approach / Dockside Depth	Seasonal / Year-round	SE
			Monitors / Working VHF Channel	Offers Transient Slips / Moorings			
1	Wickford Shipyard	401-294-3361		205/	Y/		
2	Canvasbacks	401-294-3939		1/			
2	Brewer Wickford Cove Marina p.18, inside back cover	401-884-7014	9/11	155/44	Y/Y	S	
3	Wickford Shopping & Dinghy Dock	401-294-1212	16/73	/4	/Y	S	
4	North Kingstown Town Wharf*	401-294-3316	16/65	/5	/Y		
5	Wickford Yacht Club	401-294-9010			/Y		
6	Pleasant Street Wharf	401-294-2791		43/25	Y/Y		
7	Wickford Marina	401-294-8160	10/10	65/	Y/		
8	Mill Creek Marine	401-294-3700		72/	Y/		
9	Quonset Davisville Navy Yacht Club	401-294-4912					
10	Allen Harbor Marina	401-294-1212	16/73	100/80	Y/Y		
11	Rhode Island Mooring Service	401-295-2502	11/69	78/10	Y/Y		

Information in these listings is provided by the facilities themselves. An asterisk (*) indicates v

Marine Facilities and Services

1 2 3

DOCKAGE

SERVICES

SUPPLIES

AMENITIES

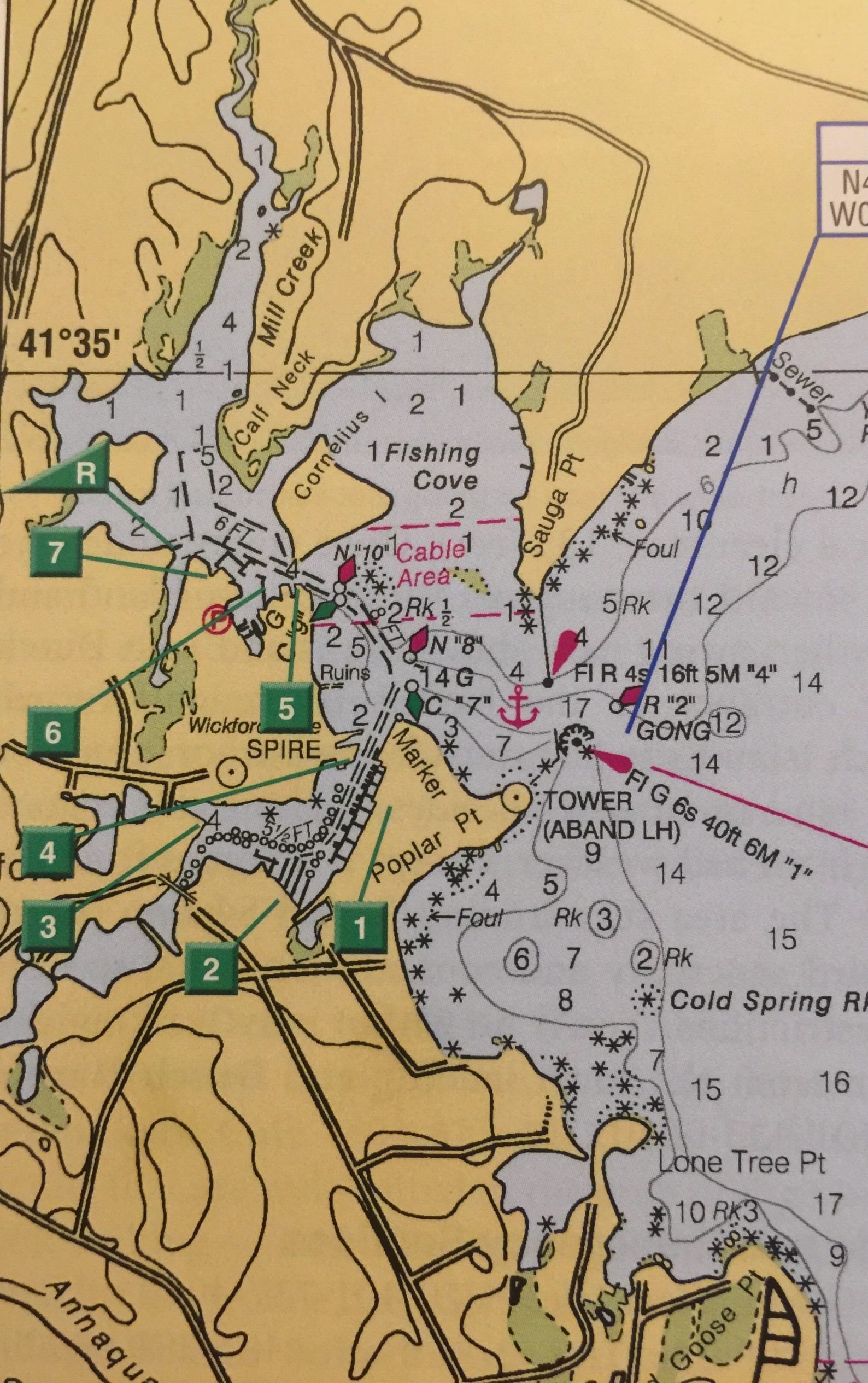
Approach / Dockside Depth in Feet at MLW
110V♦ 220VA 3 Phase■ Maximum LOA
Hookups: Water / Cable TV
Diesel / Wood / Trailer: Capacity (tons)
Repairs: Prop / Sail / Rigging / Gas
Rail / Lift / Crane / Launch Service
Ramp / Dinghy Dock / Maximum Amps
Offers Transient Slips / Moorings
Seasonal / Year-round
Total Number of Slips / Moorings
Monitors / Working VHF Channel

Restrooms / Showers / Pumpout
Marine / Groceries / Ice / Bait
Gas / Diesel
Fuel Brand
Internet / Restaurant / Discover / AmEx
MasterCard / VISA / Visa / AmEx
Hotel / Pool / Tennis / Golf
Hotel / Laundry / Pumpout
Internet / Restaurant / Discover / AmEx

SPURS
Line Cutter
854-463-2707 www.spursmarine.com

	DOCKAGE	SERVICES	SUPPLIES	AMENITIES																
1	Wickford Shipyard	401-294-3361	205/	Y/	90	10/4	W	♦▲50	D	T	PGWF	GD	Shell	MI	RSL	P	I	MV		
2	Canvasbacks	401-294-3939	1/		40			♦												
2	Brewer Wickford Cove Marina p.18, inside back cover	401-884-7014	9/11	155/44	Y/Y	S	130	9/11	W	♦▲50	D	LCT80	All	GD	Vtect	MGI	All	I	All	
3	Wickford Shopping & Dinghy Dock	401-294-1212	16/73	14	Y	S		4/4			D	SHORT-TERM ONLY				R				
4	North Kingstown Town Wharf*	401-294-3316	16/65	15	Y							COMMERCIAL VESSELS ONLY								
5	Wickford Yacht Club	401-294-9010			Y			8/8			D	T	PRIVATE—RECIPROCAL PRIVILEGES							
6	Pleasant Street Wharf	401-294-2791	43/25	Y/Y	35	12/12	W	♦30	D	LT15	PSRGDWF	GD	Vtect	MI	RS				MV	
7	Wickford Marina	401-294-8160	10/10	65/	Y/		100	12/6	W	♦▲50	D				I	All		I	MVD	
8	Mill Creek Marine	401-294-3700	72/	Y/	45	6/8	W			R	LT25	PGDWFE			M	RP			MVD	
9	Quonset Davisville Navy Yacht Club	401-294-4912									PRIVATE—RECIPROCAL PRIVILEGES									
10	Allen Harbor Marina	401-294-1212	16/73	100/80	Y/Y		32	4/8	W		RD				I	RSP				
11	Rhode Island Mooring Service	401-295-2502	11/69	78/10	Y/Y		60	7/7	W	♦▲50	D	L30	All			MI	All		I	MVD

Information in these listings is provided by the facilities themselves. An asterisk (*) indicates we have confirmed the facility's existence, but it did not respond to our request for updated information.



41°35'

N4
WC

R

7

6

4

3

2

1

5

Wickford
SPIRE

Poplar Pt

TOWER
(ABAND LH)

GONG

Cold Spring Rk

Lone Tree Pt

Goose Pt

Mill Creek

Cornelius

Fishing Cove

Sauga Pt

Cable Area

Foul

5 Rk

FIR 4s 16ft 5M "4" 14

R "2"

FIG 6s 40ft 6M "1" 14

Rk (3)

(2) Rk

10 Rk 3

Annaqu