



UNITED STATES POWER SQUADRONS®
Sail and Power Boating
BASIC PUBLIC EDUCATION COMMITTEE

America's Boating Course (ABC) – Computer Settings

Some Windows XP and Vista computers have their default system and security settings initialized in such a way that the America's Boating Course (ABC) Courseware disc will not play. These system and security settings can not be altered by the ABC Courseware. Manual intervention is required to make these simple and straightforward changes. The following may be helpful.

1. Make sure your computer has the latest version of *Adobe Flash Player* and *Adobe Shockwave Player* installed. Even though the ABC disc includes a prior version of the *Flash Player* and the *Shockwave Player*, we recommend upgrading to the latest versions available. You will have to connect to the internet and download these from the Adobe website. On Windows XP systems, the current version of *Flash Player* (as of 8/31/2009) is 10.0.32.18 and *Shockwave Player* is 11.5.1.601. If in doubt as to which version is installed on your computer, just erase the current versions and download the latest from the Adobe website.

Before downloading the newest version of *Flash Player* you must be logged on as the administrator account on Windows XP. If you're using a separate account for youngsters to devote to games, you must log off and then log on as the administrator. Next, you need to set your security preferences in the *Microsoft Internet Explorer* browser so that it does not simply ignore so-called *ActiveX* controls, which are routines built into websites to trigger actions ranging from playing a background tune to prompting for a password.

Open *Microsoft Internet Explorer*, ensure the "**Menu Bar**" is displayed (if not, press **Alt** on the keyboard), click on **Tools** and then select **Internet Options** at the bottom of the menu that drops down. In the **Internet Options** box, open the tab labeled **Security** and use the slider bar to make sure security is set at least one notch down from the highest setting; i.e., set to Medium-high or Medium. Now, click on the **Custom Level** button near the bottom of the **Options** box. That brings up a goodly number of customizable settings. Make sure the "**Download signed ActiveX controls**" is set to "**Prompt.**" Also make sure that the option to "**Run ActiveX controls and plug-ins**" is set to "**Prompt.**"

To ensure a clean install of the latest version of the software, you must first uninstall the *Adobe Flash Player* that is currently on your computer. Adobe now requires that an Adobe-created uninstall routine be used instead of the "Add or Remove Programs" routine in Control Panel. Go to www.adobe.com and select **Support** from the options on the top and select **Knowledgebase** in the next prompt. Now type in the search word "**uninstall**" and set the product name to "**Flash Player**". This brings up a page with the un-install routine ready to run. Finally, go to www.adobe.com, select **Download** and "**Flash Player**", and follow the prompts to download the *Flash Player* setup.

Check the Flash Player install by clicking on this link and by running the Flash Player Test:
http://kb.adobe.com/selfservice/viewContent.do?externalId=tn_15507 – Flash Player Test should indicate Flash Player version 9, 0, 124, 0 or later.

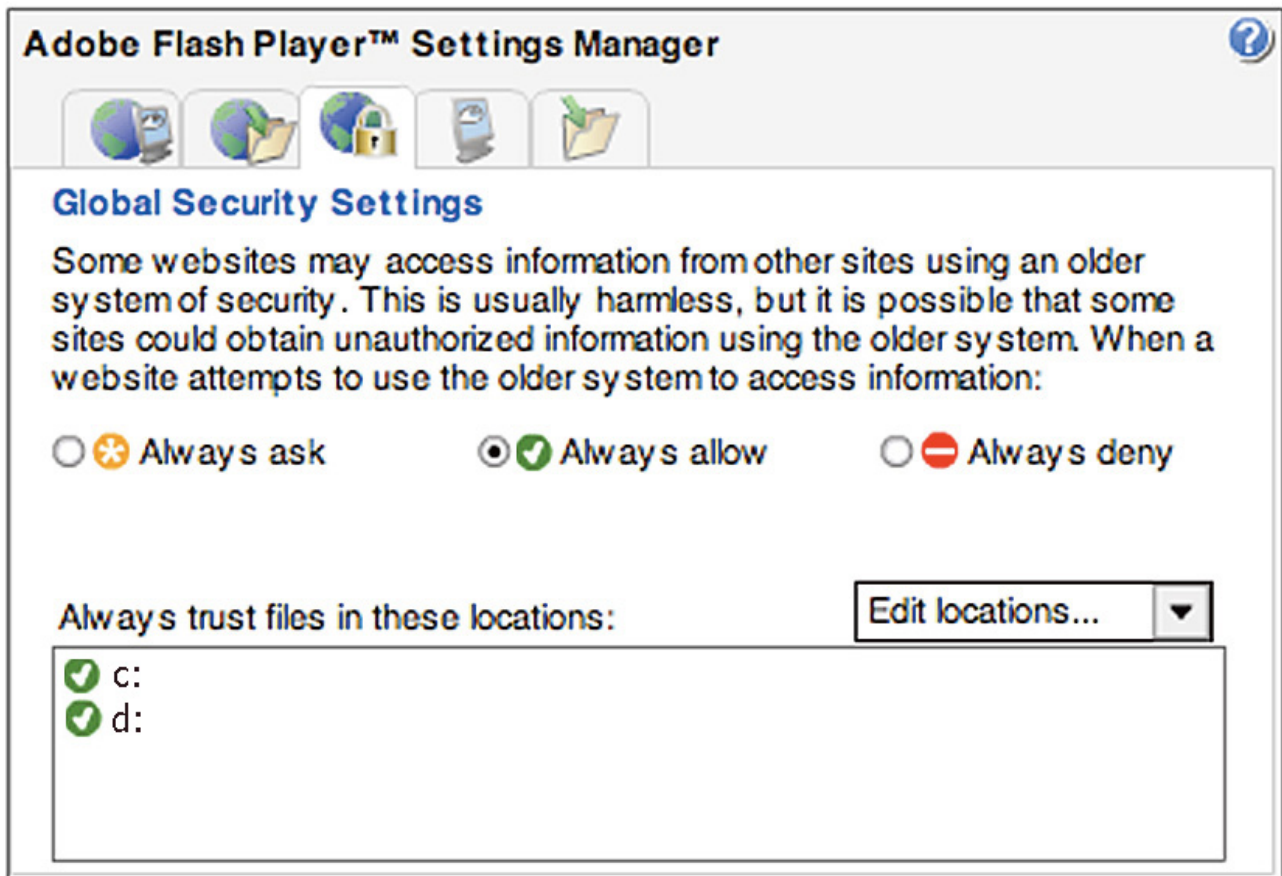
To uninstall the *Adobe Shockwave Player*, simply use Control Panel's option to "Add or Remove Programs". Then, download and install the latest version of *Shockwave Player* similarly to *Flash Player*.

2. Adobe has added new protection in the latest *Flash Player*. The *Flash Player's* default settings prevent accessing external resources including the hard-drive and CD drive. To change the default values, click here

http://www.macromedia.com/support/documentation/en/flashplayer/help/settings_manager04.html

to access the Adobe "Global Security Settings Panel" and add the drive letter for BOTH your hard-drive (c:) and your CD drive (typically d:) as "**Trusted Sites**". Wait for the *Global Security Settings* pop-up list to populate, then select the "**Always Allow**" option and click on "**Edit locations ...**" and add your drives. When you have properly revised the settings, your "*Global Security Settings Panel*" should look similar to the following. Terminate your browser and then restart the ABC Courseware.

Details may be found at: <http://www.macromedia.com/support/documentation/en/flashplayer/help/help02.html>



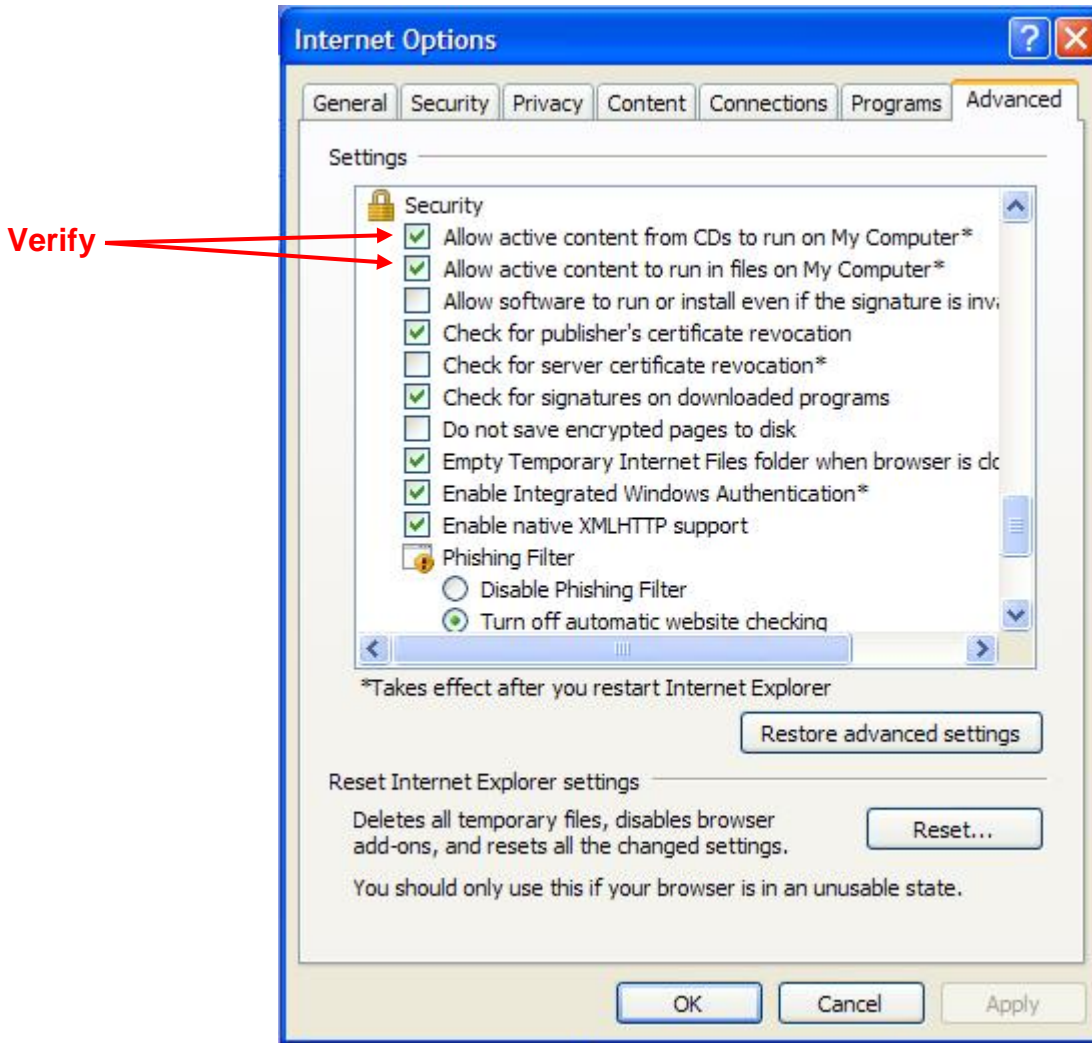
3. After installing the latest version of *Adobe Flash Player*, you should also change the Local Storage setting to **“Unlimited”**. To do this, start the ABC courseware and obtain the general menu:



Click once with the left mouse button and then right click anywhere on the menu. An *Adobe Flash Player* menu will appear. There are four small icons at the bottom of the menu. Select the **Local Storage** icon and move the slider all the way to the right for **“Unlimited”**.

4. Another default setting that may cause problems is permitting active content files to run on your PC. Open *Microsoft Internet Explorer*, ensure the **“Menu Bar”** is displayed (if not, press **Alt** on the keyboard), click on **Tools** and then select **Internet Options** at the bottom of the menu that drops down. Make sure that your PC has *Microsoft Internet Explorer 6* or later installed. Next, click on the **Advanced** tab and scroll down to the **Security** section. Make sure that the following IE security options are checked:

- **“Allow active content to run in files on My Computer”**
- **“Allow active content from CDs to run on My Computer”**



As an aside, there are other *Flash Player* settings that will affect its performance on your computer. If interested, go to the following Macromedia website and click on the various icons: Global Privacy Settings; Global Security Settings; etc.

http://www.macromedia.com/support/documentation/en/flashplayer/help/settings_manager03.html

5. When using the ABC Courseware online (as compared to using the stand alone disc), one additional source of difficulty could be with the Pop-up Blocker settings with *Microsoft Internet Explorer*. The Pop-up Blocker is a new feature in *Internet Explorer*. This feature blocks most unwanted pop-up windows from appearing. By default, the Pop-up Blocker is turned on. When the Pop-up Blocker is turned on, the automatic and background pop-up windows are blocked, but the pop-up windows that are opened by a user will still open in the usual manner.

On the Tools menu

To configure the *Microsoft Internet Explorer* Pop-up Blocker, follow these steps:

Start *Internet Explorer* and then on the **Tools** menu, point to **Pop-up Blocker**, and then click **Turn On Pop-up Blocker** to turn on the Pop-up Blocker, or click **Turn Off Pop-up Blocker** to turn off the Pop-up Blocker. To customize the setting, click on **Pop-up Blocker Settings** and then in the **Address of Web site to allow** box, type the address of the ABC Web site, and then click **Add**. Click **Close**.

Override key

To open a pop-up window yourself, even though you may have set the filter level to **High: Block all pop-ups [Ctrl to override]**, keep the **CTRL** key pressed, and then open the pop-up window.

Additional details may be found at: <http://support.microsoft.com/kb/843016>